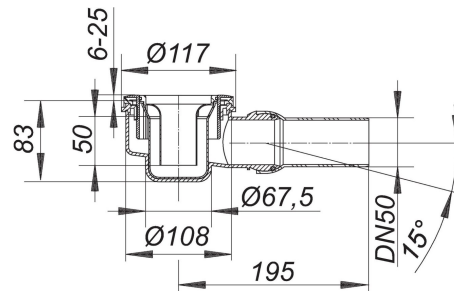


21. November 2019

DALLMER**shower trap body ORIO, DN 50**

Product No. **160010**
 EAN: 4001636160010
 Discount group: 1



conforming to DIN EN 274
 with build-in height only 85 mm, for shower trays with a 90 mm outlet

specification:

- outlet horizontal, with ball-joint, adjustable 0 – 15 degrees
- trap insert, removable for cleaning
- temporary blanking plate/installation key

material:

polypropylene

The outlet connector can be supplied in ABS to suit British Standard sizes and PE-HD conforming to DIN EN 1519. Please enquire.

Other colours on request.

Flow rate tested to DIN EN 274
 (with 15 mm water over grate)

	Norm	DALLMER
DN 50	0.4 l/s	0.54 l/s

Product No.	Description	Dimensions
160683	trap insert ORIO	

21. November 2019

Product No.	Description	Dimensions
160812	raised grid ORIO, ABS chromed	
160829	raised grid ORIO, ABS white	
160706	raised grid ORIO, stainless steel	
160720	raised grid ORIO, stainless steel, design football	